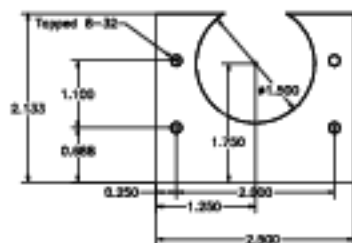
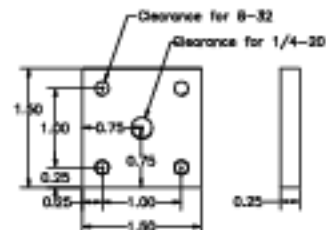


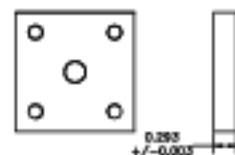
Part 28-031, Mount for Discharge Tube. Make of 5/8-inch aluminum plate. (1 reqd)



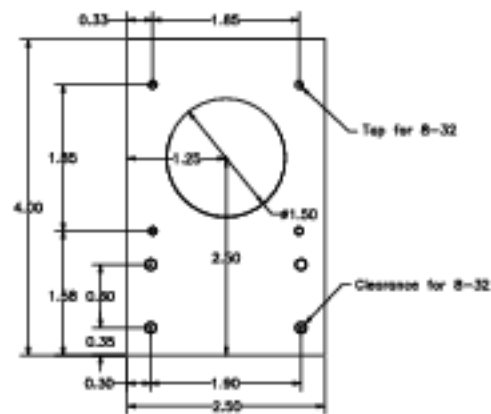
Part 28-032, Right-Angled Adapter for mounting discharge tube. Modify existing angle plate from Ealing. (1 reqd)



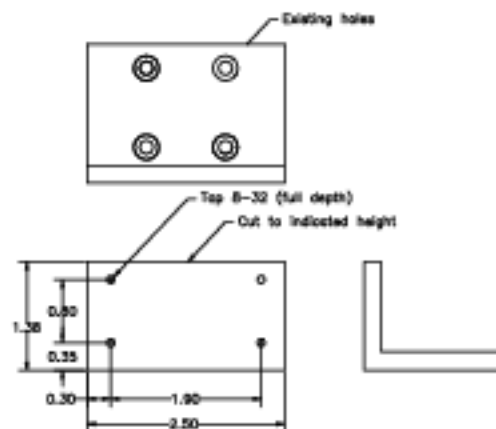
Part 28-011, Spacer no. 1 (for mounting hollow-cathode lamp. Make of 1/4-inch aluminum plate (1 reqd)



Part 28-012, Spacer no. 2 for mounting continuum source. Make of aluminum plate. Dimensions not shown are the same as for part 28-011. (1 reqd)



Part 28-022, Motor Mount for flip mirror. Make out of 1/4-inch aluminum plate (reqd)



Part 28-021, Mounting angle for motor for flip mirror. Modify commercial angle plate from Ealing. (1 reqd)

Tenn. State Univ.	
CASS 2-m AST Project	
03/28/00	AST-28-P01
J.A.E.	