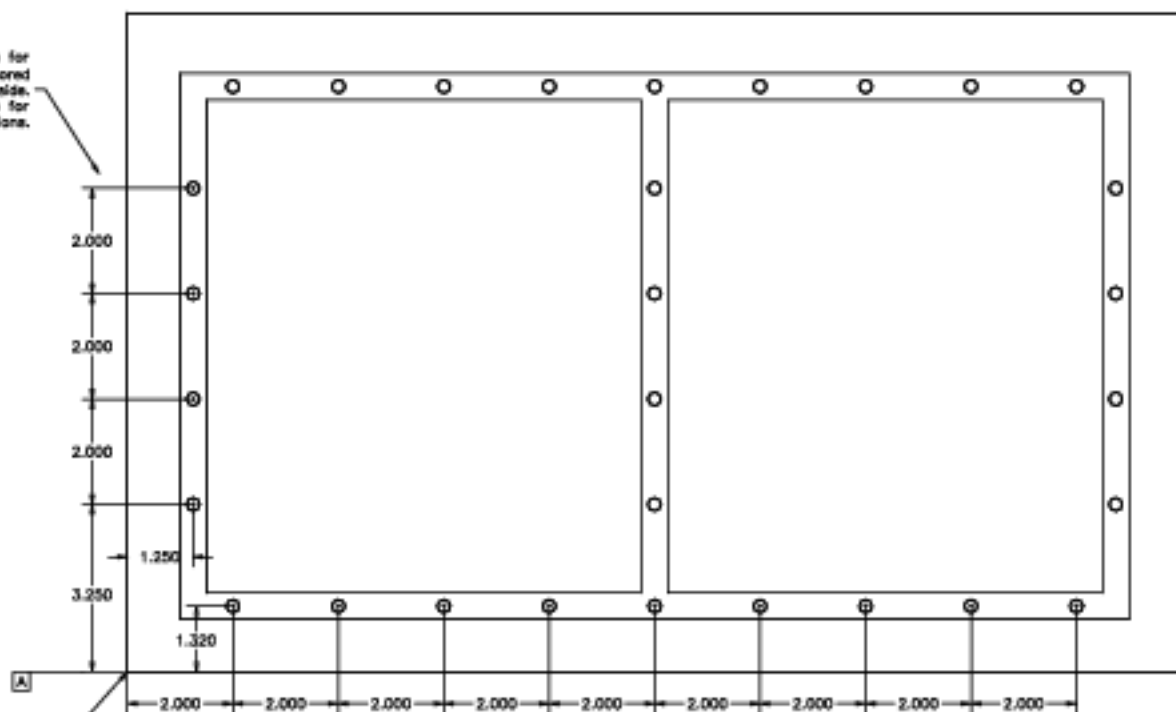


Screw holes in part 23-011, base plate for the stand for the echelle grating. (Note that the counterbores for the screw holes are not drawn here.)

Screw Holes in Base for Echelle

Clearance holes for 1/4-20, counterbored 0.30 in from this side. See ast-11-p05 for locations.



Make measurements from datum A and from a line from this corner perpendicular to it.

Top View of Part



Counterbore holes from this side

(Cut through middle of part)

		Tenn. State Univ.	
		CASS 2-m AST Project	
03/27/00		AST-23-R01	
J.A.E.			