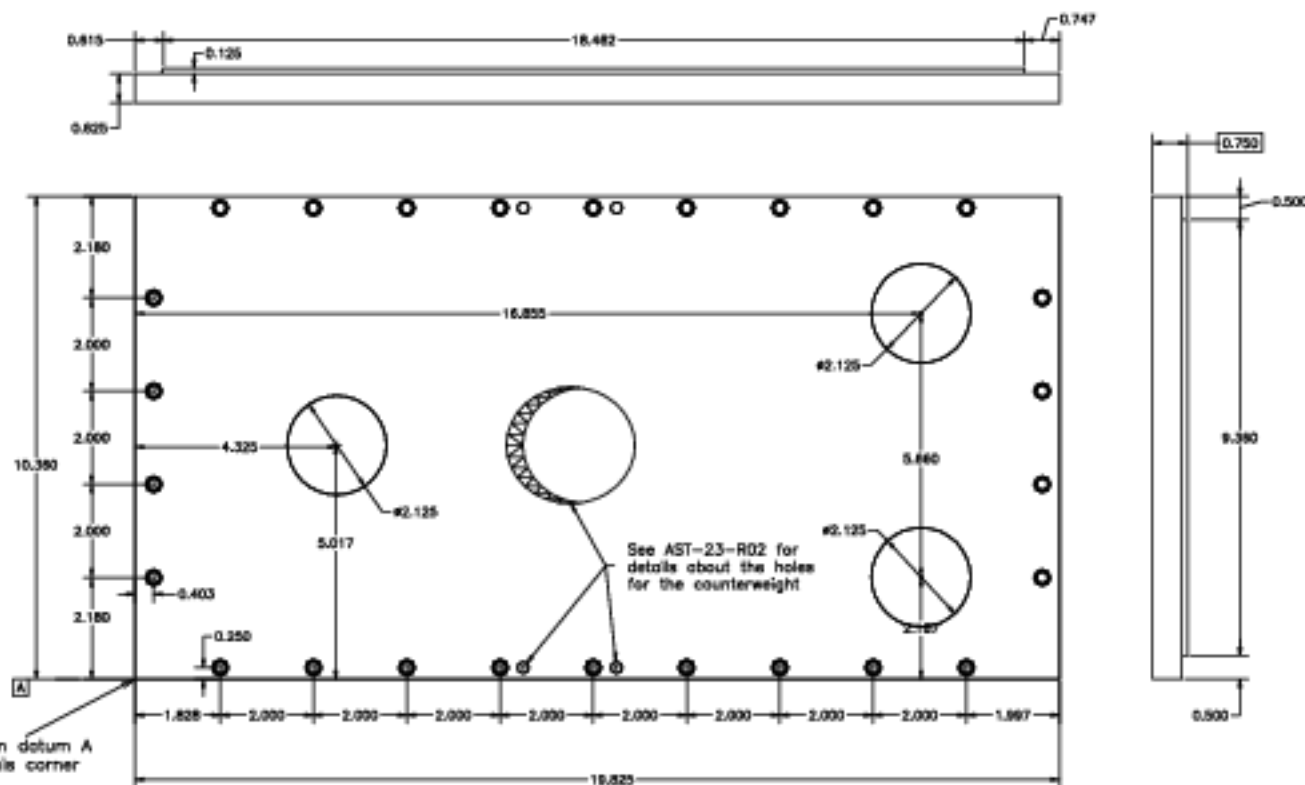


Part 23-019, Top Plate for Echelle Stand. Make out of 0.75-inch aluminum plate (1 reqd)

Top Plate for Echelle Stand



Make measurements from datum A and from a line from this corner perpendicular to it.

Top View of Part

Tenn. State Univ.	
CASS 2-m AST Project	
03/27/00	AST-23-P05
J.A.E.	