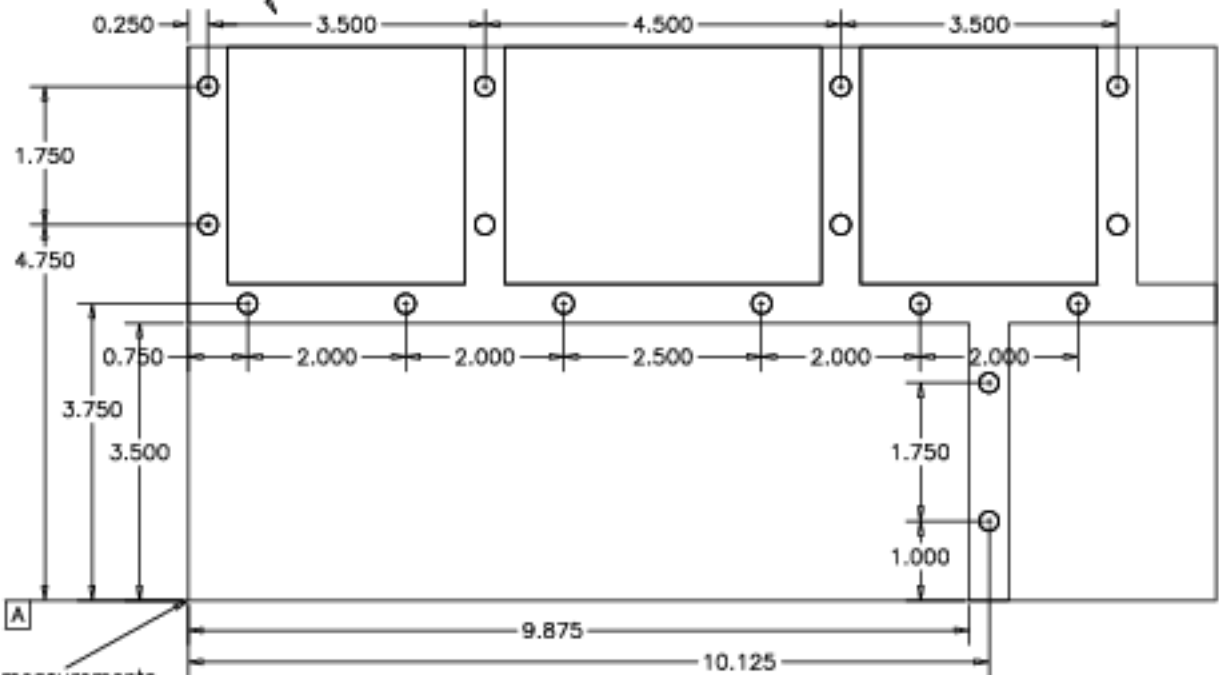


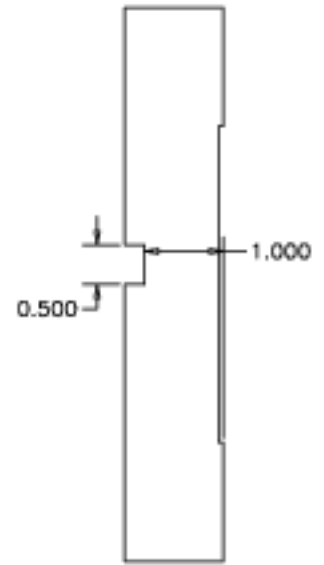
Clearance holes for 1/4-20, counterbored 0.35 in from other side.

Part 22-011, base Plate for Collimator Stand. Make of 1.25-in aluminum plate. (2 reqd, one with MIRROR IMAGE of grooves and screw holes shown here).



Make measurements from datum A and from a line from this corner perpendicular to it.

Top View of Part



Tenn. State Univ.	
CASS 2-m AST Project	
03/13/00	AST-22-P05
J.A.E.	