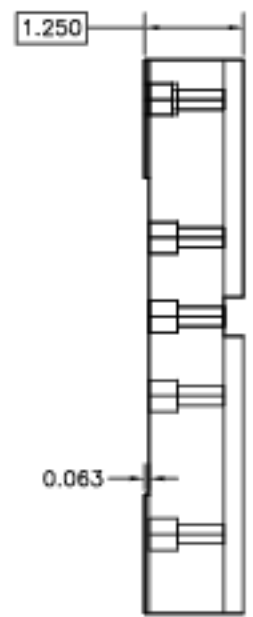


Base for Collimator Stand,1

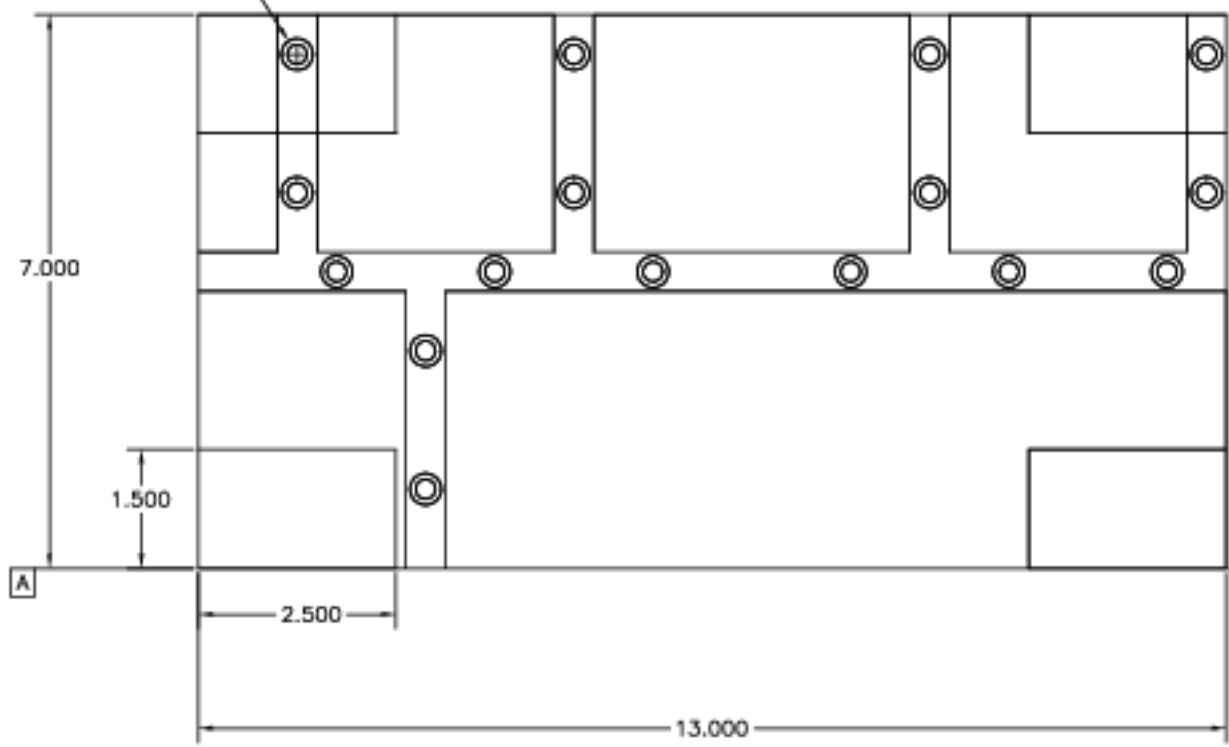


Clearance holes for 1/4-20, counterbored 0.35 in from this side. See ast-11-p05 for locations.

Part 22-011, base Plate for Collimator Stand. Make of 1.25-in aluminum plate. (2 reqd, one with MIRROR IMAGE of grooves and screw holes shown here).



Make measurements from datum A and from a line from this corner perpendicular to it.



Bottom View of Part

Tenn. State Univ.	
CASS 2-m AST Project	
03/13/00	AST-22-P04
J.A.E.	