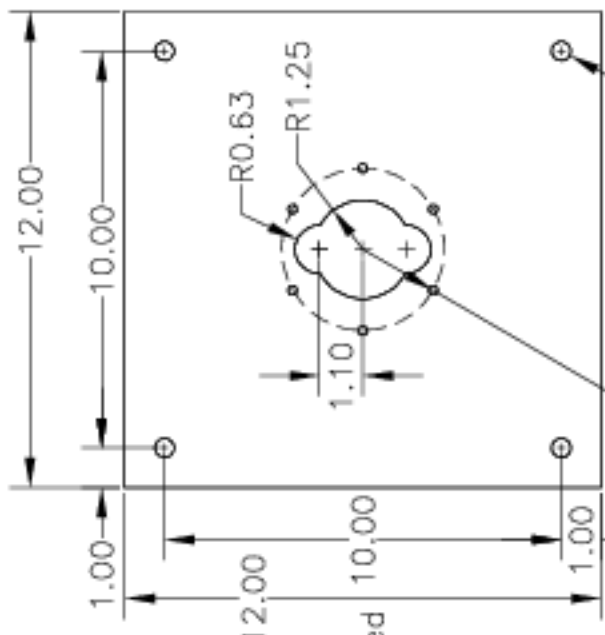


Motor Mounts for Control Test

Tenn. State Univ.	
CASS 2-m AST Project	
10/02/97	AST-11-P10
J.A.E.	



Part 11-091, Motor Base Plate. Make part out of 1/2-inch steel plate. (2 reqd)

6 holes to clear M6 screws, evenly spaced on R2.874 circle, counterbored 3/8 inches

6 holes, evenly spaced on R4.000 circle, tapped for 3/8-16

6 clearance holes for M6, evenly spaced on R2.050 circle

Part 11-093, Reaction-Wheel Adapter. Make part out of 1-inch steel plate. (2 reqd)