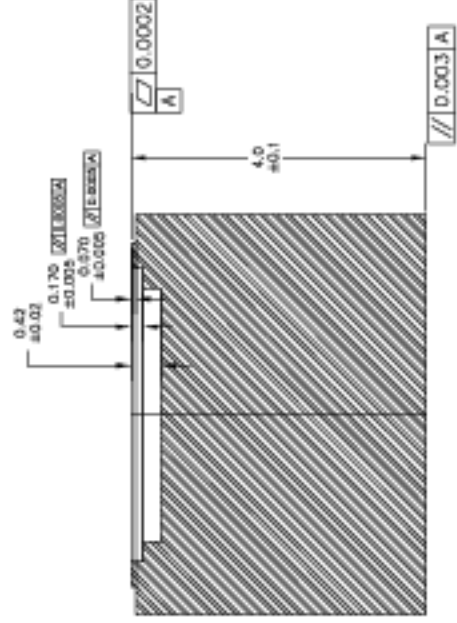
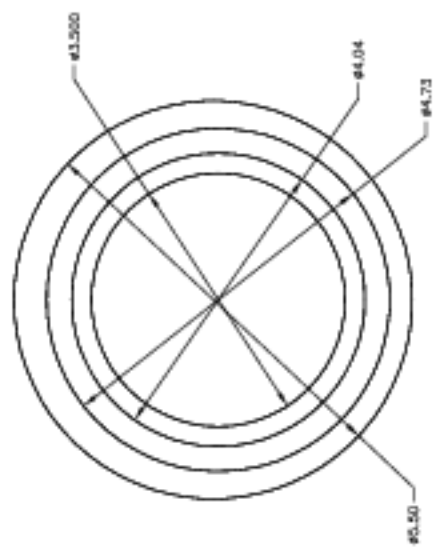
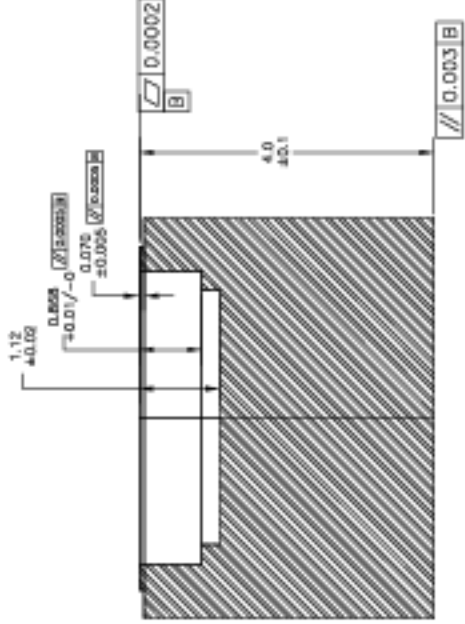
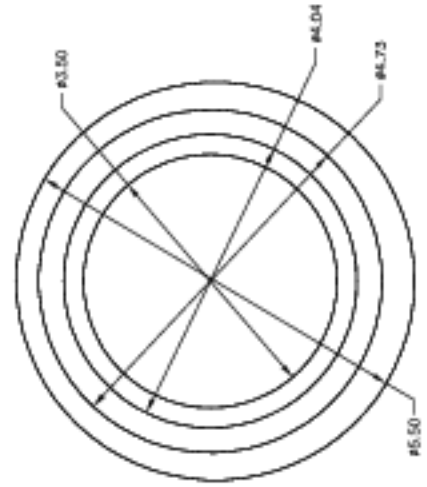


8 7 6 5 4 3 2 1

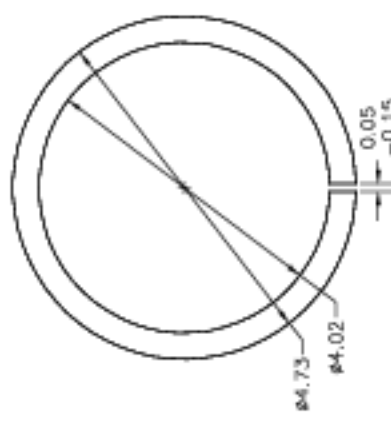
Bearing Mounting Tools, 1



Part 10-100, Bearing Press (1st type).  
Make of steel rod. (1 reqd)



Part 10-101, Bearing Press (2nd type).  
Make of steel rod. (1 reqd)



Part 10-102, Alignment Tool.  
Make of steel rod.  
Break all sharp corners on this part. (1 reqd)

Note: Tolerances are  $\pm 0.01$  unless otherwise stated.

Tenn. State Univ.		CASS 2-m AST Project	
08/15/97	J.A.E.	AST-10-P20	1

8 7 6 5 4 3 2 1