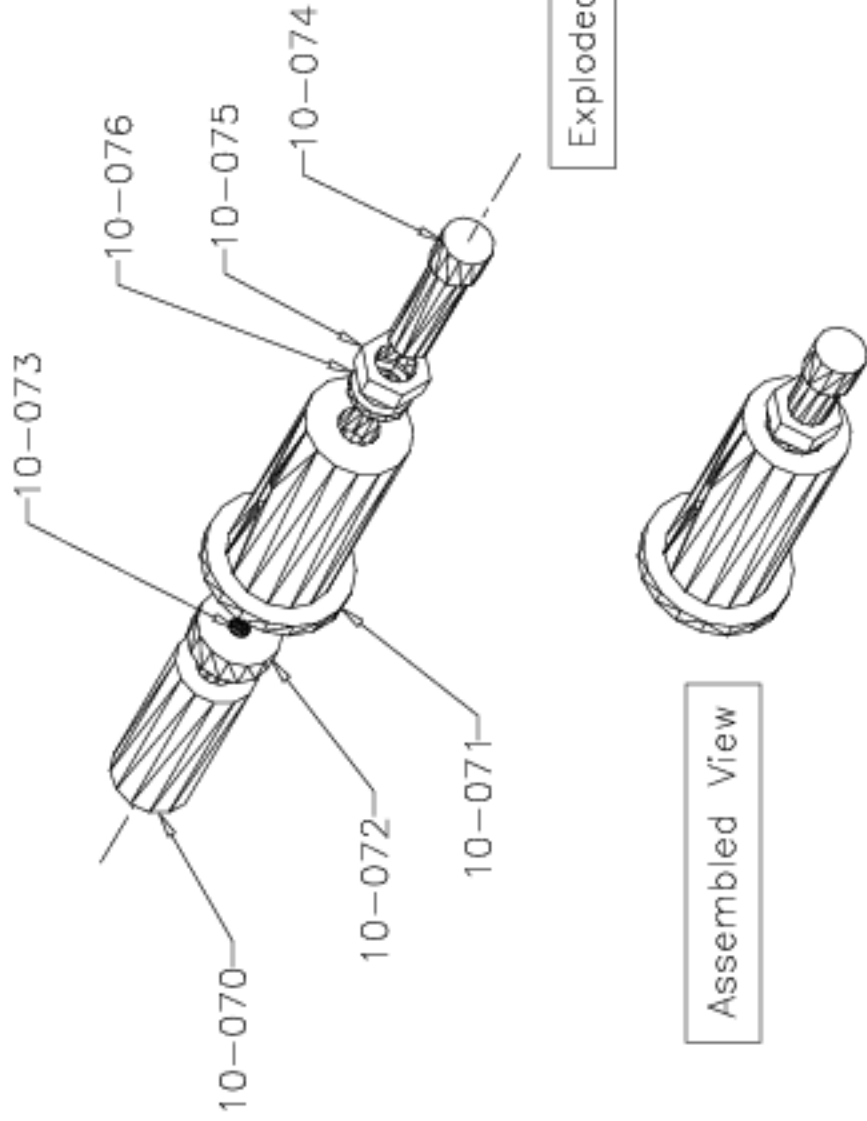


Note: Eight of these Tractor-Clamp Tensioning Springs are required per tractor. Quantities of parts are given per spring unit, so 8 of each part are needed per tractor, or 32 for the whole telescope, including spares. All of these parts except for the springs are made of stainless steel. Parts are given in AST-10-P17.



No.	Qty.	Description
76	1	1/2x1/8 lock washer (stainless)
75	1	1/2-20x5/16 jam nut (stainless)
74	1	1/2-20x1.75 socket-head cap screw (stainless)
73	1	1/4-inch ball
72	1	Pressure plate
71	1	Spring-holder body
70	1	1x2.5-inch press spring

Tenn. State Univ.	
CASS 2-m AST Project	
08/04/97	AST-10-A11
J.A.E.	

Tractor Clamp Spring Holder