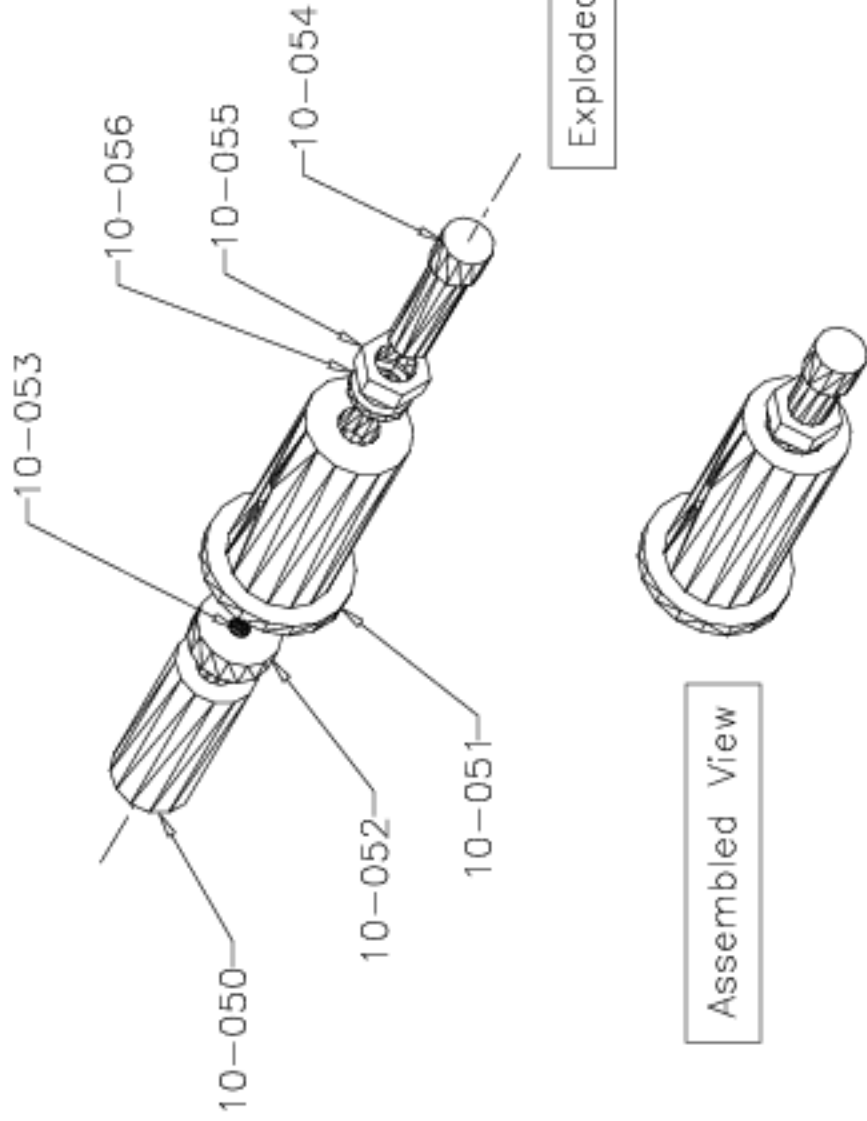


Note: Eight of these Tractor-Clamp Tensioning Springs are required per tractor. Quantities of parts are given per spring unit, so 8 of each part are needed per tractor, or 32 for the whole telescope, including spares. All of these parts except for the springs are made of stainless steel. Parts are given in AST-10-P08.



Exploded View

Assembled View

AST-10-P08		Tractor Clamp Spring Holder	
No.	Qty.	Description	
56	1	1/2x1/8 lock washer (stainless)	
55	1	1/2-20x5/16 jam nut (stainless)	
54	1	1/2-20x1.75 socket-head cap screw (stainless)	
53	1	1/4-inch ball	
52	1	Pressure plate	
51	1	Spring-holder body	
50	1	1x2.5-inch press spring	
Tenn. State Univ.			A
CASS 2-m AST Project			
04/10/97		AST-10-A06	
J.A.E.			