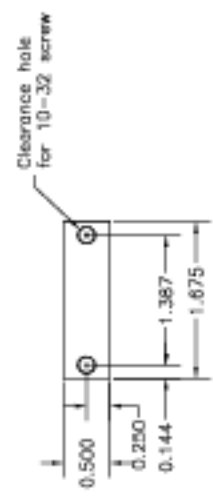


8 7 6 5 4 3 2 1

D C B A



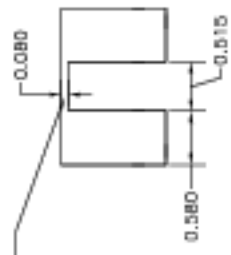
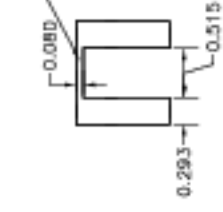
Part 7-078, Retainer. Make of 1/8-inch aluminum plate (or strap; 1 reqd)



Part 7-073, Counterweight. Make of lead. (2 reqd; TSU will modify one for 7-089)

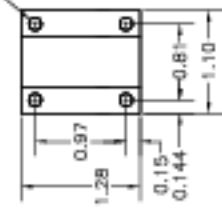


Make these parts as two separate pieces, eliminating thin bridges between them.



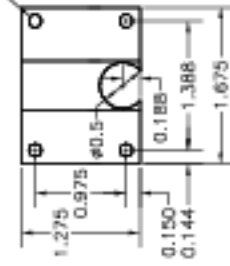
Note: Tolerances are  $\pm 0.01$  on dimensions without tolerances specified,  $\pm 0.003$  on relative positions of holes.

Four through holes tapped for 10-32 for 3/8 inch on BOTTOM SDE (opposite this view)



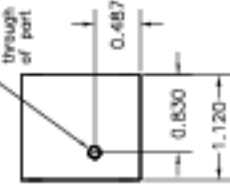
Part 7-050, Flexure-Lever Holder. Make of aluminum. (3 reqd)

Four through holes tapped for 10-32 for 3/8 inch on BOTTOM SDE (opposite this view); also tap top sides of holes 3/8 inch for screws for retainer

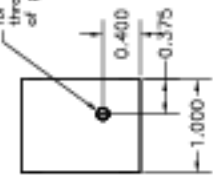


Part 7-070, Axial Counterweight Holder. Make of aluminum. (1 reqd)

0.1582  $-0/+0.0005$  for flexural pivot through both sides of part



0.1250  $-0/+0.0005$  for flexural pivot through both sides of part



Part No.	7-073	7-078	7-089	7-050	7-070
Quantity	2	1	1	3	1
Material	Lead	Aluminum	Aluminum	Aluminum	Aluminum
Notes					
Parts for Mirror Cell, 4					

Tenn. State Univ.	
CASS 2-m AST Project	
02/09/98	AST-07-P15
J.A.E.	

8 7 6 5 4 3 2 1

D C B A