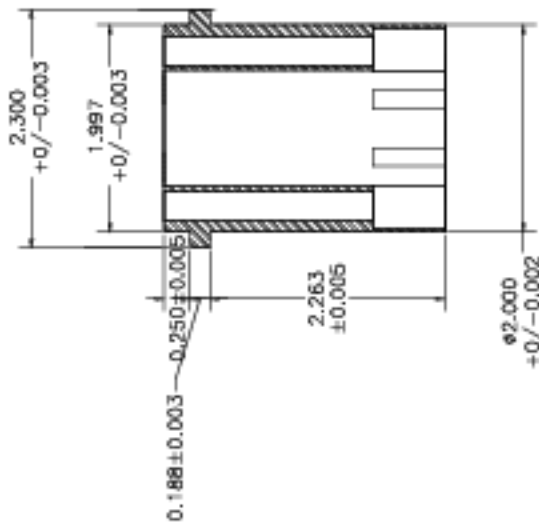
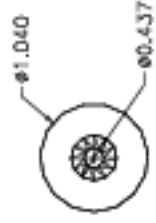
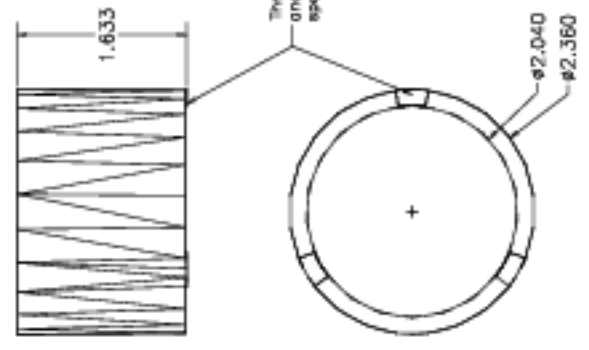


Stud & Keeper for Sec. Mirror

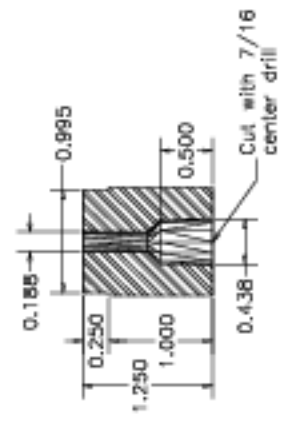


Six clearance holes for 1/4-inch screws equally spaced on ø1.500 circle, counterbored 0.688 inches; plus six holes 0.5 inches deep (threaded for 6-32 screws (3/8 deep) evenly spaced on the same circle.

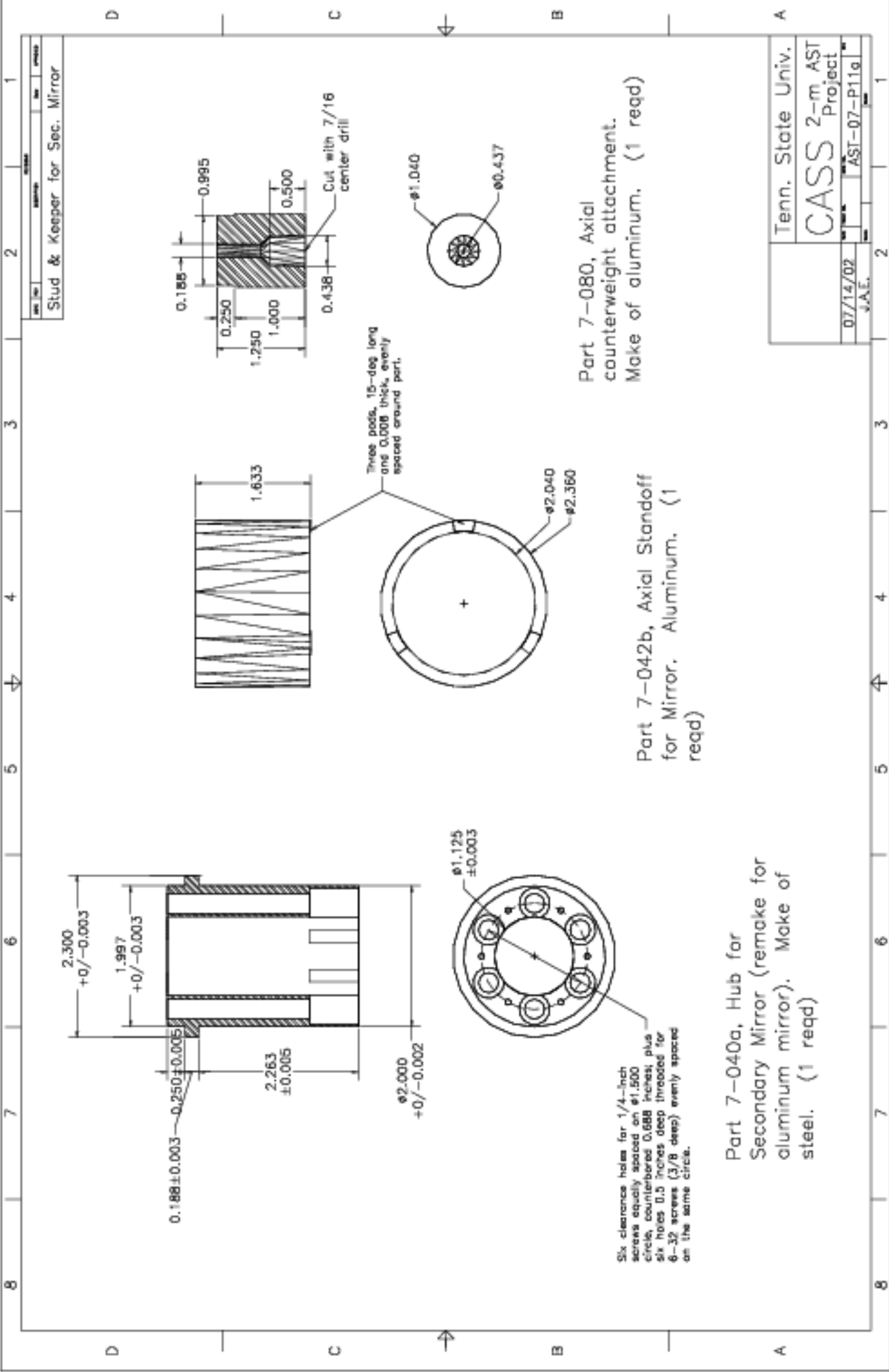
Part 7-040a, Hub for Secondary Mirror (remake for aluminum mirror). Make of steel. (1 reqd)



Part 7-042b, Axial Standoff for Mirror. Aluminum. (1 reqd)



Part 7-080, Axial counterweight attachment. Make of aluminum. (1 reqd)



Tenn. State Univ.	
CASS 2-m AST Project	
07/14/02	J.A.E.
AST-07-P11a	