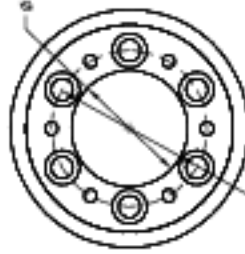
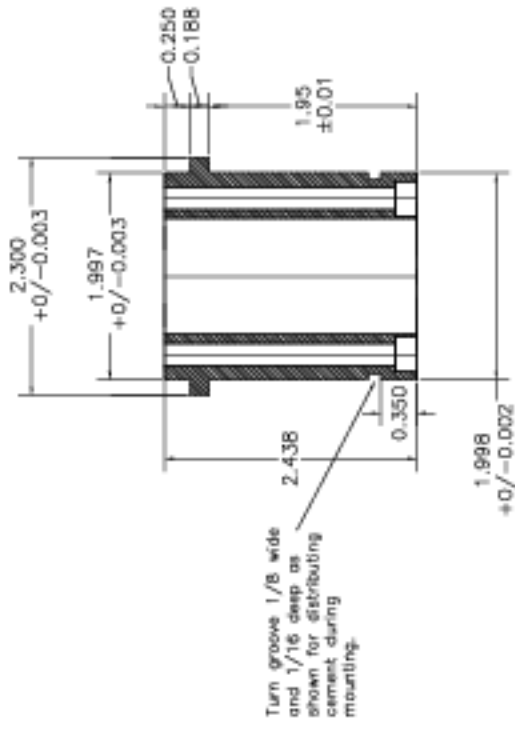
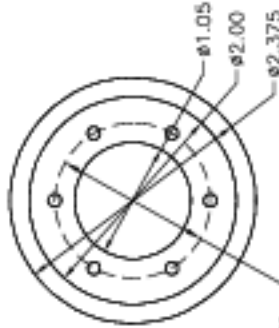


Stud & Keeper for Sec. Mirror



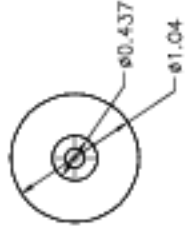
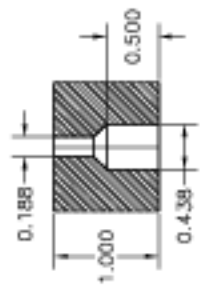
Six light clearance holes for 1/4-inch screws equally spaced on ø1.050 circle, counterbored 0.30 inches; plus six holes 0.5 inches deep threaded for 6-32 screws (3/8 deep) evenly spaced on the same circle.

Part 7-040, Hub for Secondary Mirror. Make of invar cylinder supplied by TSU. (1 reqd)



Six clearance holes for no. 6 screws, bolts evenly spaced on ø1.500 circle.

Part 7-042, Mirror Retaining Ring. Make of stainless steel or invar. (1 reqd)



Part 7-080, Axial counterweight attachment. Make of aluminum. (1 reqd)

Tenn. State Univ.	
CASS 2-m AST Project	
02/20/98	AST-07-P11
J.A.E.	