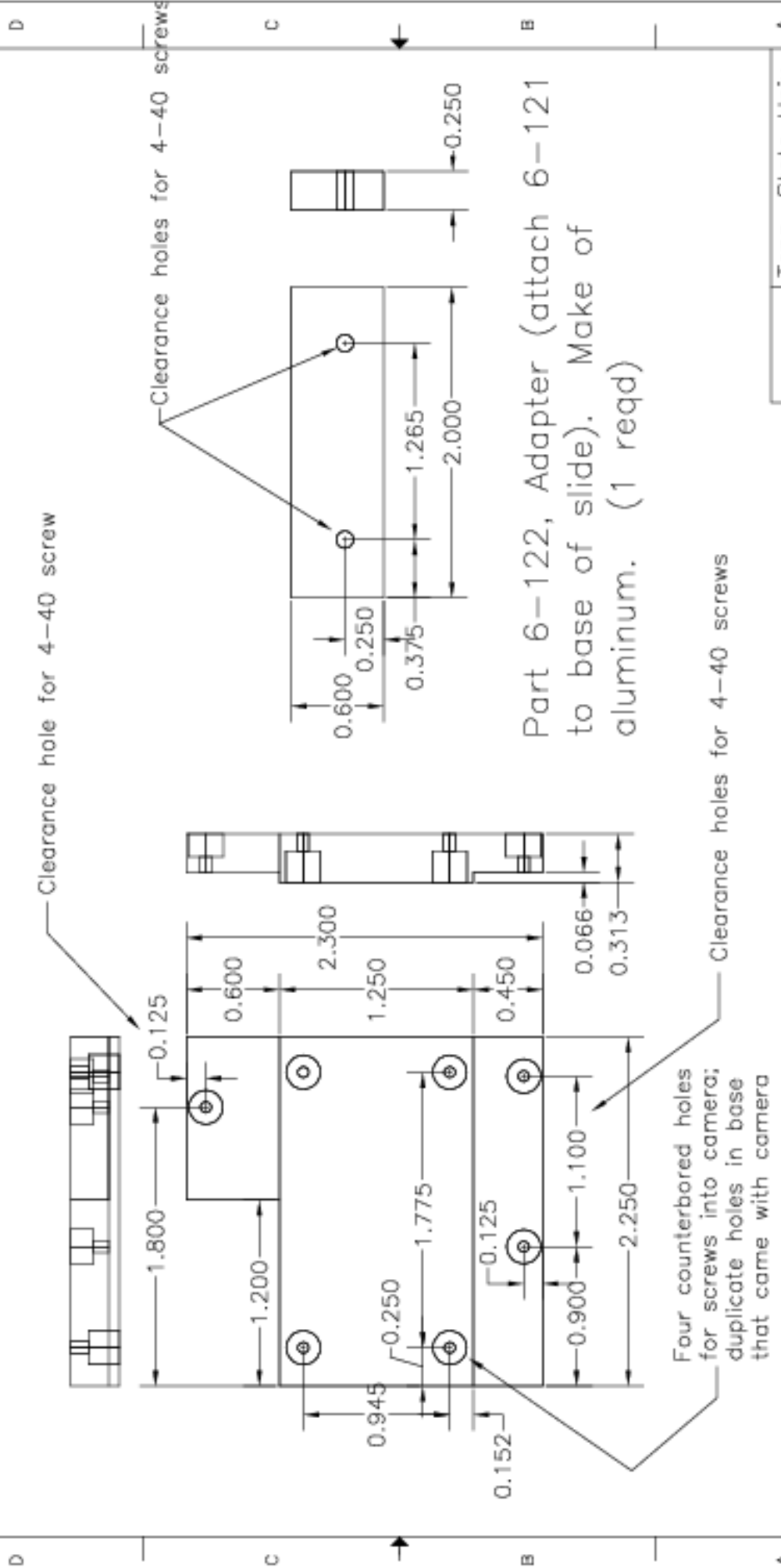


1 2 3 4 5 6 7 8



Clearance hole for 4-40 screw

Four counterbored holes for screws into camera; duplicate holes in base that came with camera

Clearance holes for 4-40 screws

Part 6-122, Adapter (attach 6-121 to base of slide). Make of aluminum. (1 reqd)

Part 6-121, Base for Guide Camera. Make of aluminum. (1 reqd)

| | |
|----------------------|--------|
| Tenn. State Univ. | |
| CASS 2-m AST Project | |
| 10/12/00 | J.A.E. |
| AST-05-P35 | |

1 2 3 4 5 6 7 8