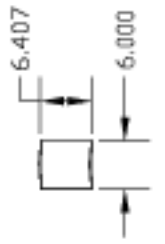
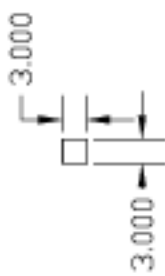


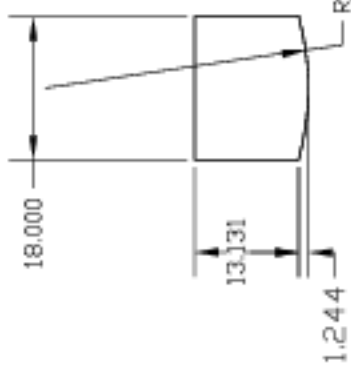
Top Plates etc.



Part 3-018, stay-bar attachment. 1-in Al plate (1 reqd)



Part 3-019, Azimuth drive mount. 1-in Al plate. (2 reqd)



Part 3-017, Altitude Drive Attachment Plate. 1-inch aluminum plate. (1 reqd)

Part 3-007, Top Plate of Fork Base. This is made of 1/2-inch aluminum plate. Tolerances on the 8 (R5 in) ventilation holes is 0.25 inches in both location and radius. For dimensions of the slots for plug welds, see AST-03-P10 (1 reqd)

Tenn. State Univ.	
CASS 2-m AST Project	
02/07/97	AST-03-P05
J.A.E.	