

Accessories for Oil Pad, 2

Tenn. State Univ.
 CASS 2-m AST Project
 10/08/97
 J.A.E.
 AST-02-P11

(N.B.) 4 existing clearance holes for 3/8-inch socket-head cap screws, evenly spaced on 43.438 circle concentric with bore of 2-035, counterbored 0.45 inches

This view is a cross section through the two set-screw holes. It is left unfinished to avoid confusion.

Tap for 3/8-18 set screw (to secure nut in flange) through outer flange only.

After permanently assembling nut and flange, tap hole for 3/8-18 set screw through both outer flange and nut.

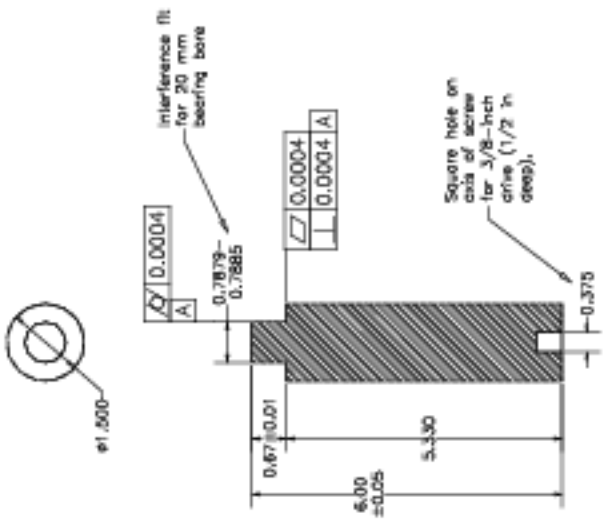
Parts 2-035 and 2-036, Bronze Nut and Flange. Parts provided by TSU must be modified according to instructions. (3 reqd for telescope)

Part 2-041, Oil-Rod Keeper. Make out of stainless steel. Tolerances are 0.01 in. (6 reqd for telescope)

Clearance hole for 1/2-inch screw

Part 2-039, Jam Nut. Make out of 1.5-4 stainless steel hex nut provided by TSU by cutting in two and machining faces flat and perpendicular to axis. (3 reqd for telescope)

Part 2-034, Levelling Screw. Make out of 1.5-4 stainless steel stock provided by TSU. (3 reqd for telescope)



Interference fit for 20 mm bearing bore

Square hole on side of screw for 3/8-inch drive (1/2 in deep).

