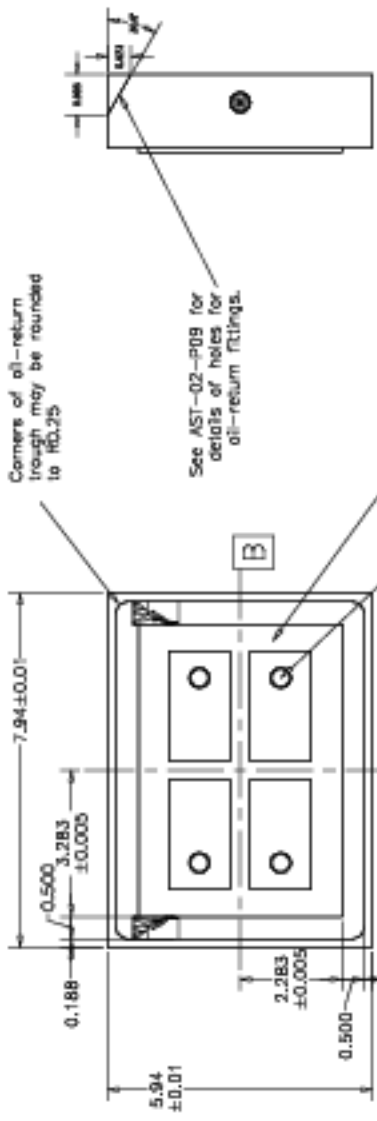


Oil Pad for Azimuth Bearing, 1

Part 2-020, Oil Pad (azimuth thrust bearing). Make of stainless steel. Tolerances are ± 0.01 in except as noted. The three datums marked are two mutually perpendicular planes through the center of the part (A&B) and the top plane of the bearing (datum C). (3 reqd for telescope)

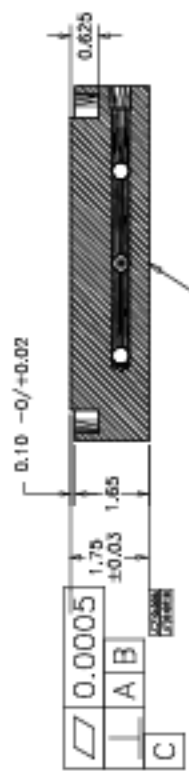


Corners of oil-return trough may be rounded to R0.25

See AST-02-P09 for details of holes for oil-return fittings.

For machining of top plate, see AST-02-P07

For machining of oil passages, see AST-02-P08



For machining of bottom plate, see AST-02-P08

Tenn. State Univ.
 CASS 2-m AST Project
 07/15/97
 J.A.E. AST-02-P06